

## Ireland's Newest Training & Meeting Room Facilities

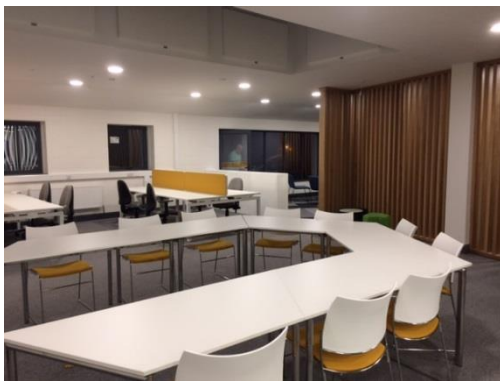
The Mill Enterprise Hub, Drogheda, recently doubled the size of our building, and have expanded our meeting room & training facilities.

The Mill is a voluntary organisation dedicated to supporting a culture of innovation and entrepreneurship in the Greater Drogheda region.



### Why use The Mill for Training?

- ✓ Modern purpose-built 67m2 training facilities with IT infrastructure / wireless
- ✓ Suitable for computer training with up to 20 people
- ✓ 25 minutes from Dublin airport
- ✓ Custom-built 'Break-out' areas
- ✓ Hi-spec Kitchen facilities
- ✓ Free car-parking
- ✓ Half-day or day rates available
- ✓ Ideal for medium term (3 to 6 month) rental



### Why use The Mill for Meetings?

- ✓ Great atmosphere amongst largest community of entrepreneurs in region
- ✓ Free parking & cycle racks
- ✓ Break-out areas including roof-garden and Zen Garden
- ✓ Catering can be arranged
- ✓ High quality Audio-visual equipment
- ✓ Suitable for Boardroom, Sales or internal Training sessions

Contact Breannán on 041-9802444 to arrange a tour

[www.themilldrogheda.ie](http://www.themilldrogheda.ie) – News Updates & Ezine  
[www.linkedin.com/company/themillenterprisehub](https://www.linkedin.com/company/themillenterprisehub)

@themilldrogheda  
[www.facebook.com/themillenterprisehub](https://www.facebook.com/themillenterprisehub)

